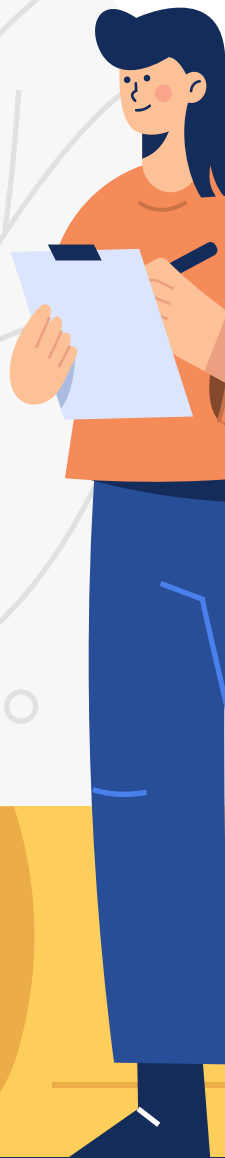


AgilePoint's Flexible Pricing Model





The Industry's Role Model



AgilePoint understands that markets and consumer dynamics change daily, which is why our pricing model is completely customizable to your organization's needs. In addition, our pricing model is uniquely based on the value we provide to you, meaning it is based on the number of AgilePoint Apps that are being actively utilized in your environment.

“By 2025, 75% of enterprise software providers will offer a consumption- or transaction-based pricing model in their portfolio, up from 35% today.”

– Gartner



AgilePoint Apps include:

Form-based model

A standalone app that uses a single form as its primary input method with no other application logic.

Standalone process model

A component that includes any number of forms and application logic that serves a specific purpose. Any number of process models can be grouped together to create a larger business application, but each process model is considered an App for license purposes.

A parent process model with any number of subprocesses

A standalone process model can be subdivided into subprocesses in order to organize and manage the functionality. A parent process along with all of its subprocesses are considered a functional App, and are organized together in the App Builder as a single App. However, the parent process model and its subprocesses are considered separately for license calculation purposes. Subprocesses are not counted in the same way as their parent processes.

Each application type above only counts as 1 AgilePoint App, even in the case of multi step (up to 5) subprocess models. The best way to understand the significance of the AgilePoint App is by walking through our license usage formula, which is $nFBA + nSPM + nPPM + \text{ROUNDUP}(nSPM/5)$.

In this equation:

- **nFBA** = number of form-based apps
- **nSPM** = number of standalone process models
- **nPPM** = number of parent process models
- **nSPM** = number of subprocess models
- **ROUNDUP** = a math function for rounding up to the nearest whole number





AgilePoint saves on Licensing Fees | Scenario

	Environment A	Environment B	Environment C	Environment D
Form Based Apps	5	1	2	3
Standalone Process Models	5	1	2	3
Parent Process Models	0	1	2	3
Sub-Process Models	0	1	5	12
Total App License Consumed	10	4	7	12



Pricing Seat Count

As you can see, in environments C and D you would expect to need 11 and 21 license seats, respectively. However, thanks to our unique license seat formula, the number of required seats is reduced substantially. Aside from our unique license seat formula, AgilePoint also saves license seats in the following ways:

1. One user logged in on various devices= 1 license seat. If an AgilePoint user is developing an application using the AgilePoint App Builder on desktop and is simultaneously logged in to an AgilePoint mobile application at the same time to complete a task, then this only consumes one license seat.
2. AgilePoint Server Engine executing a process = 0 license seats. Most competitor providers require license seats for process execution. AgilePoint does not. Instead, user sessions are only applied to applications that directly connect to the AgilePoint System. For example, if a process is executed by the AgilePoint Server Engine, then no license seat is required.
3. AgilePoint System connected processes = 0 license seats (if completed within 5 minutes). If a process requires a user session (such as to approve an e-Form or an external web application communicating with AgilePoint using authentication credentials), then a

license seat is required. However, if the user ceases interacting with AgilePoint before 5 minutes, then the user's license becomes free for another user. As a result, processes that involve user sessions can avoid consuming a seat if completed within 5 minutes, which is typically the case with automated applications.

Another property of AgilePoint's pricing model is its ability to provide concurrent, or floating, license models. A concurrent license seat represents the maximum number of users who can connect to and consume the AgilePoint PaaS at one time. The benefit of using this type of license model is that users can share a license seat, which is often practical considering employees work in shifts and not 24/7.

